

MouthWatch Button Capture Software Installation Guide

MouthWatch cameras easily integrate many leading imaging software platforms through our Capture Button software. This guide will explain how to install and configure our Capture Button software with your imaging software.

Step 1 – Download the Button Capture Software

- Go to: www.mymouthwatch.com/support and download our Button Capture Software by clicking on the Download Now button:

Step 1 - Install Button Capture Software

Download our Button Capture Software Download Now

Review the installation guide. Be sure to follow all steps for proper installation. Installation Guide

Please note, our button capture software only works on Windows XP and newer computers. If you are using a recent version of MacPractice, you will not need our software. If you are using a different software on a Mac, please contact support for assistance.

Step 2 – Run the Installer

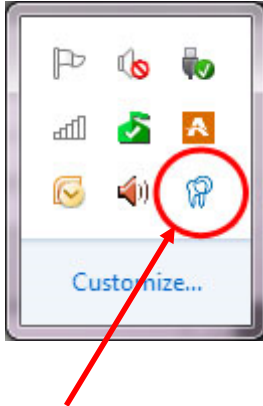
- In your Downloads folder, or where you told the computer to place the file, double-click on setupmouthwatch.exe



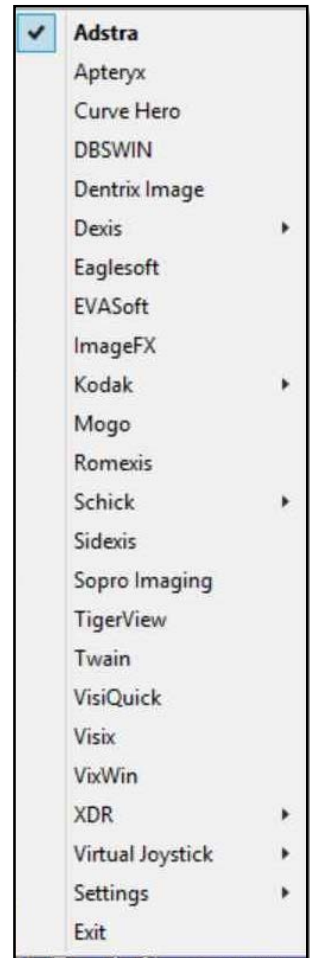
- Follow the prompts to complete the installation

Step 3 – Select Your Imaging Software

Once the installation has completed, you will see a MouthWatch icon in your System Tray (down by the clock on your screen)



- Right click on this icon to display a list of compatible programs
- Left click on the name of the program you will use
- The list will then close
- Settings:
 - If you would like a camera shutter sound to play every time you press the button, open Settings and enable SnapShot Sound.
 - If you would like a 1 second delay between the button press and capture, select SnapShot Delay (some users find this improves image sharpness)



Step 4 – Moving Forward

With the software installed and your imaging program selected, your preference will be remembered every time you close the program or restart the computer.

If you need to start the program again for some reason, open your Start Menu and look in the MouthWatch Capture folder

Step 5 – All Set!

There are some advanced settings that may be required for certain programs or installations. If you need help, please call MouthWatch at 877-544-4342 or email support@mymouthwatch.com