

Instructions for Kodak/Carestream Integration

MouthWatch cameras easily integrate with Kodak Dental Imaging software. Use the MouthWatch camera to capture images of the patient and store them directly into the patient record.

Step 1 – Download & Install the Button Capture Software

- Go to: www.mymouthwatch.com/support and download our Button Capture Software.
- View the installation guide
- Install the Button Capture Software program, following all steps in the guide
- Right click on the MouthWatch Capture icon in the system tray
- Select “Kodak -> Kodak Fast” from the Button Capture Software menu

Step 2 – Plug in the MouthWatch Camera

Make sure that you plug the USB connector into a powered USB port. Sometimes, these are located on the front or back of the computer. If your monitor has USB ports, these may not be powered.

Step 3 – Windows Recognizes the Camera

Once the MouthWatch camera is plugged in, you should see a small alert on the bottom saying that New Hardware “USB Video Device” was recognized.

Step 4 – Install the Third Party Video Card Software

Kodak may not have been installed with the Third Party Video Card/Kodak 1000 Intraoral Camera function enabled.

- To install this functionality, download and install the below files, selecting all options during the installation:

<http://www.mymouthwatch.com/download/SetupSTV.exe>

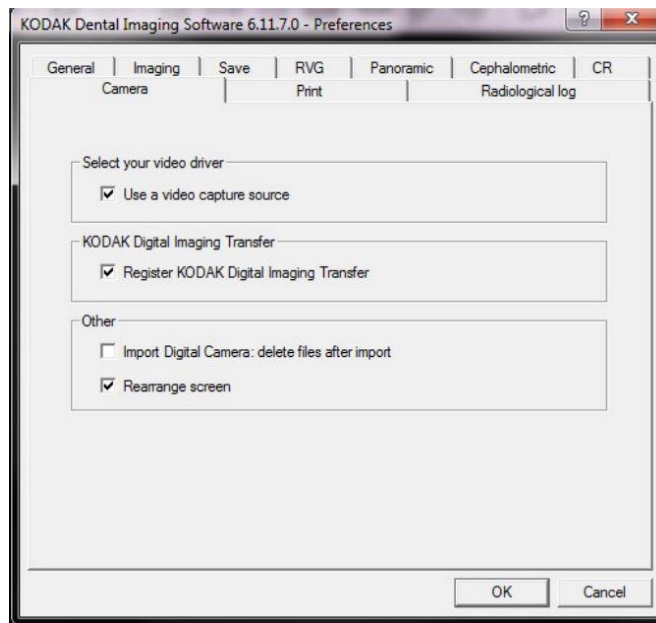
http://www.mymouthwatch.com/download/SetupSTV_v2.exe

- Run the installation and check the box for Third Party Video Capture and Kodak 1000 Intraoral Camera
- If you are running an older (32 bit) version on 64 bit computers, you may need to contact Carestream/Kodak support for an upgrade to the latest version.

Step 4 – Tell Kodak You Are Using a Camera

Select the Options/Preference menu, then Camera tab

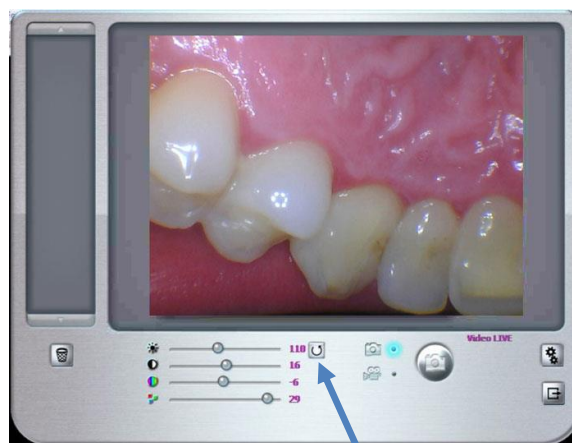
- Check the box that says “Use a video capture source”



Step 5 – Open a Patient Record

Once in the patient record, press F5 or press the Intraoral Camera button on the toolbar

- This will launch the video capture window



- Make sure to click the “Refresh Colors” button.

Step 6 – Capture Images

As long as the MouthWatch Button Capture program is running and set to Kodak Fast, clicking the capture button will take a photo. Once done, exit the capture window and assign images to the patient record.

Step 7 – All Set!