

Instructions for Prof.Suni Integration

MouthWatch cameras easily integrate with Prof.Suni imaging software. Use the MouthWatch camera to capture images of the patient and store them directly into the patient record.

*Prof.Suni does not require the MouthWatch Button Capture Software.

Step 1 – Plug in the MouthWatch Camera

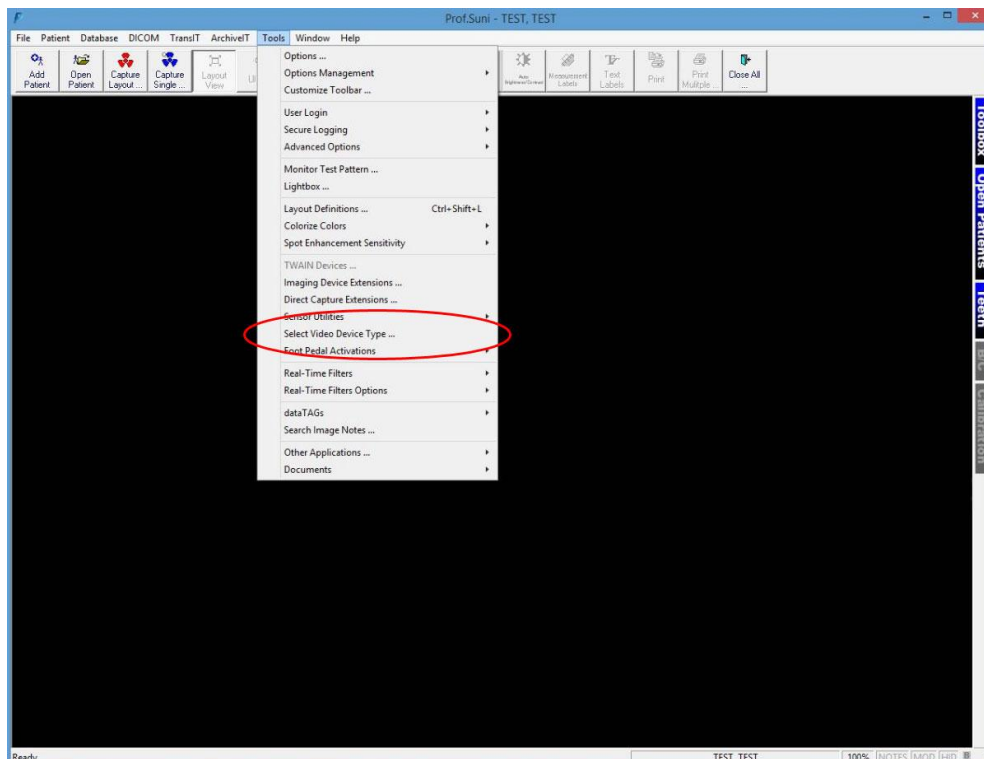
Make sure that you plug the USB connector into a powered USB port. Sometimes, these are located on the front or back of the computer. If your monitor has USB ports, these may not be powered.

Step 2 – Windows Recognizes the Camera

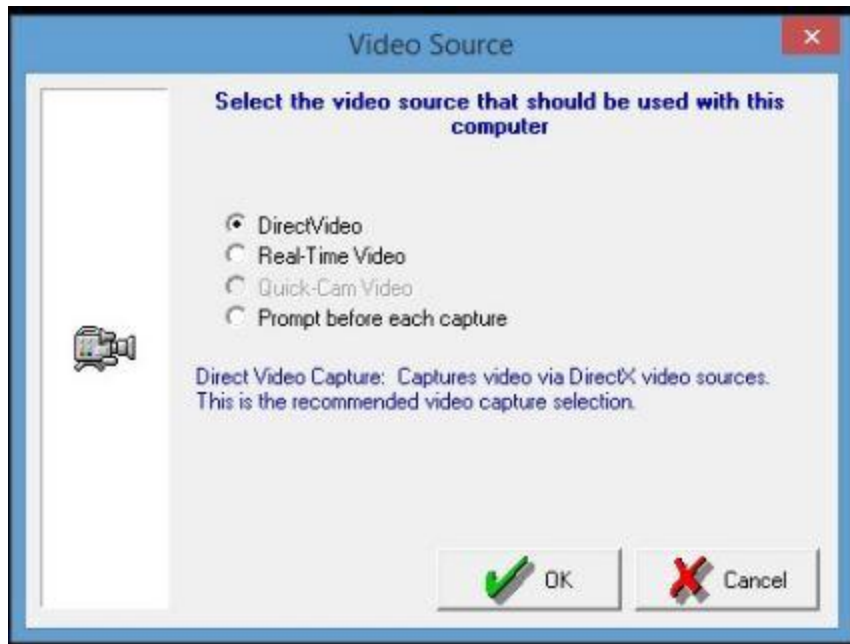
Once the MouthWatch camera is plugged in, you should see a small alert in the system tray saying that New Hardware “USB Video Device” was recognized.

Step 3 – Select Video Device Type

From the Prof.Suni Imaging home screen, click TOOLS > SELECT VIDEO DEVICE TYPE

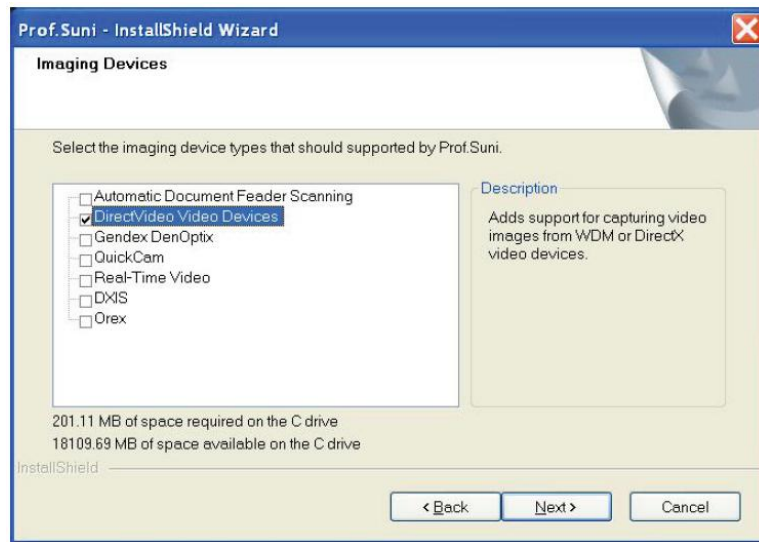


You will see this screen:



- Select “Direct Video”
- Click OK, go to Step 4

NOTE: If no Video Devices are supported in your installation of Prof.Suni, you will need to run the original Prof.Suni installation CD-ROM and select “DirectVideo Video Devices” from the Imaging Devices screen. Then complete the installation of Prof.Suni.



Step 4 – Capturing An Image

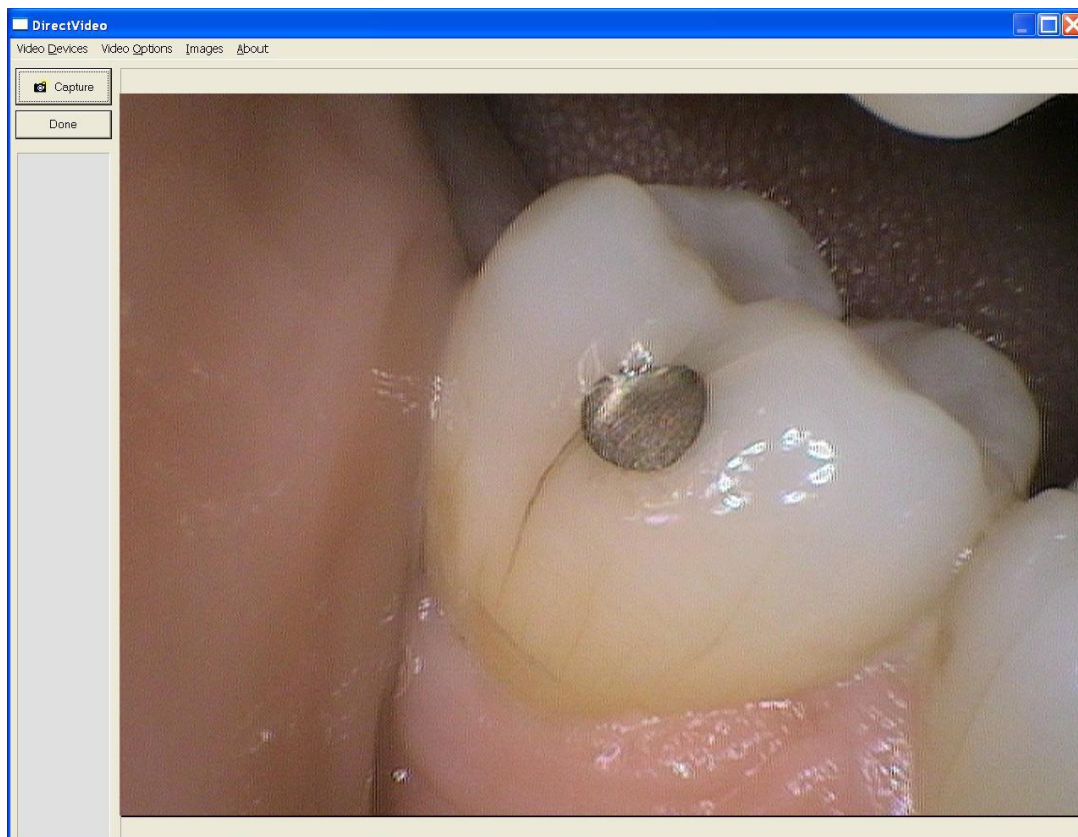
Open a patient record and click on the “Capture Video” button:



Press “OK”

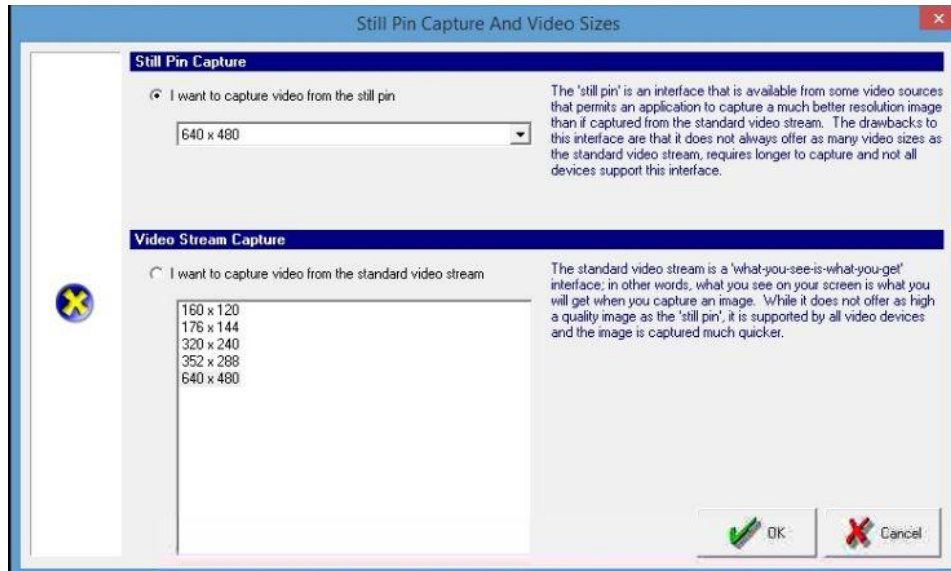
After pressing OK, a live video stream should appear in the window.
If not, click Video Devices and make sure **USB Video Device** is selected

If USB Video Device is not an option, make sure the MouthWatch camera is plugged into a powered USB port on your computer and try again.



Before the capture button will work on the camera, you will need to follow these steps:

1. In the Direct Video window, click Video Options -> Still Pin and Other Video Sizes
2. Select "I want to capture from the Still Pin"
3. Set the resolution to 640x480
4. Click OK



Step 5 – All Set!

Now, clicking the capture button will save images to the sidebar as thumbnails. Once you click "Done" they will be assigned to the patient record.